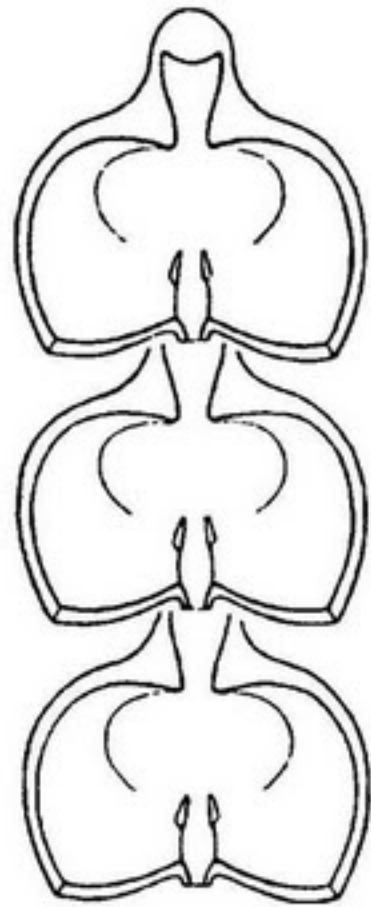


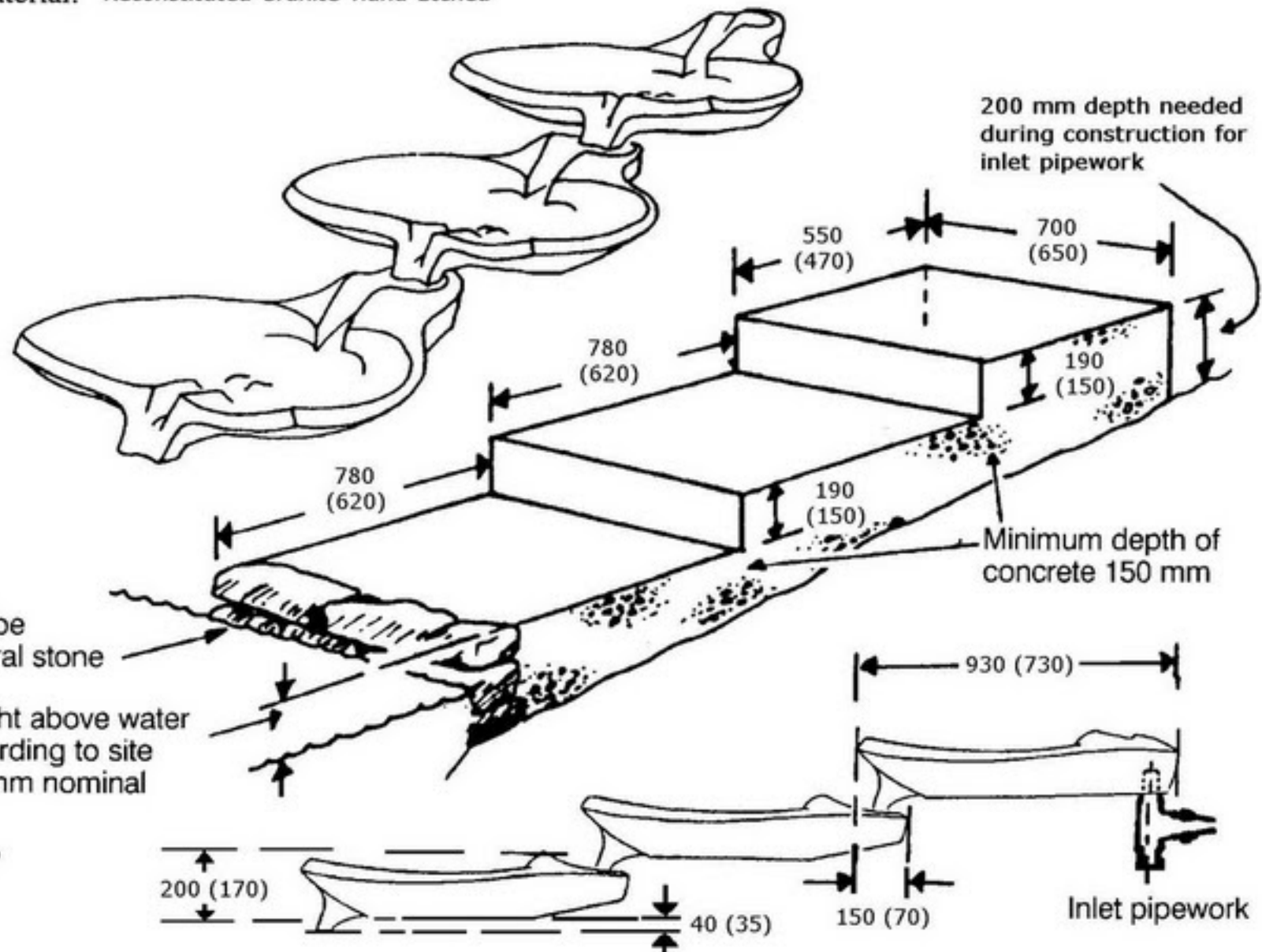
The Emerson Flowform



Flow rate: 45-85 (20-40) ltrs/min Width: 990 (680) mm
Height: 240 (205) mm Weight: 85 (32) kg
Material: Reconstituted Granite Hand-Etched

Foundations for a cascade of 3 forms

all dimensions in mm (bracketed figures refer to the small Emerson)



Line may be curved up to 5° at each junction