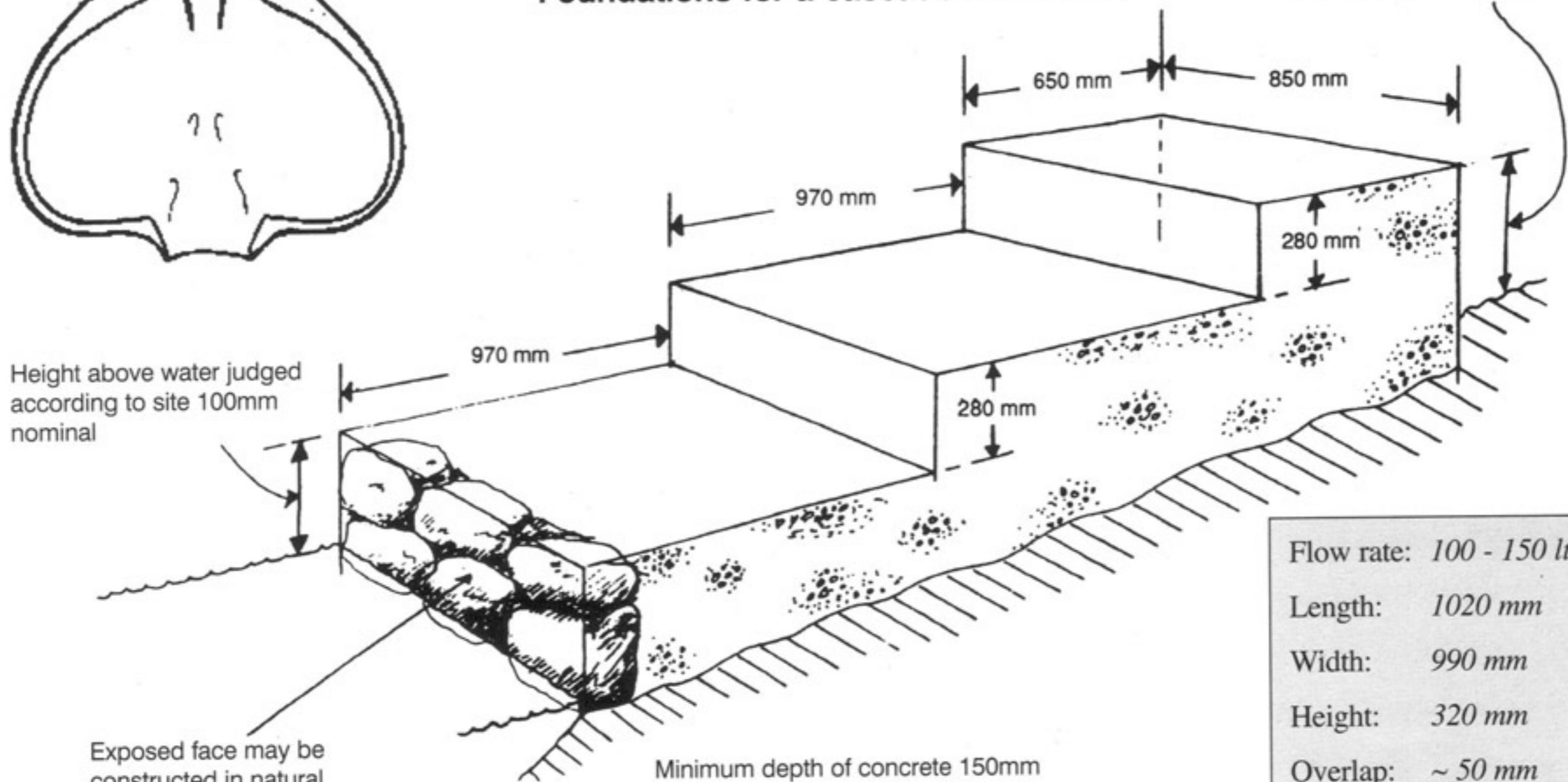
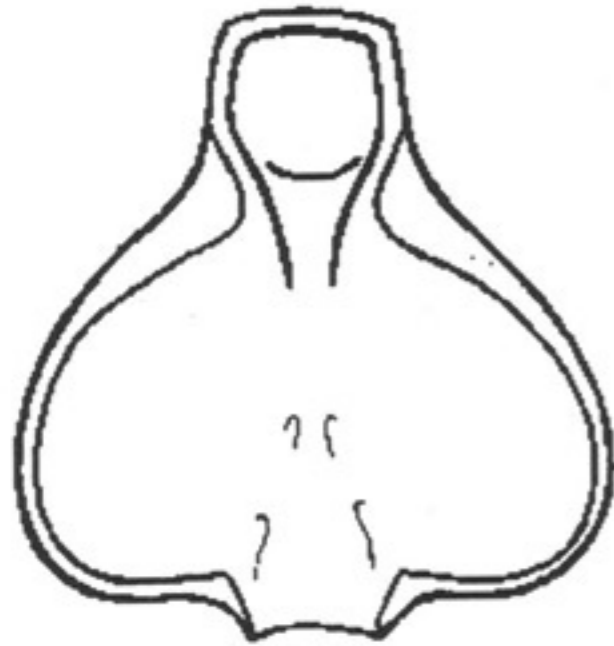


The Malmö Flowform

Foundations for a cascade of 3 forms

350 mm depth needed during construction for inlet pipe



Height above water judged according to site 100mm nominal

Exposed face may be constructed in natural stone

Minimum depth of concrete 150mm

Final landscaping around the forms covers the foundations

Flow rate:	100 - 150 ltrs/min
Length:	1020 mm
Width:	990 mm
Height:	320 mm
Overlap:	~ 50 mm
Material:	Reconstituted Granite Hand-Etched