

# THE EMERSON FLOWFORM

## Foundations for a cascade of 3 forms

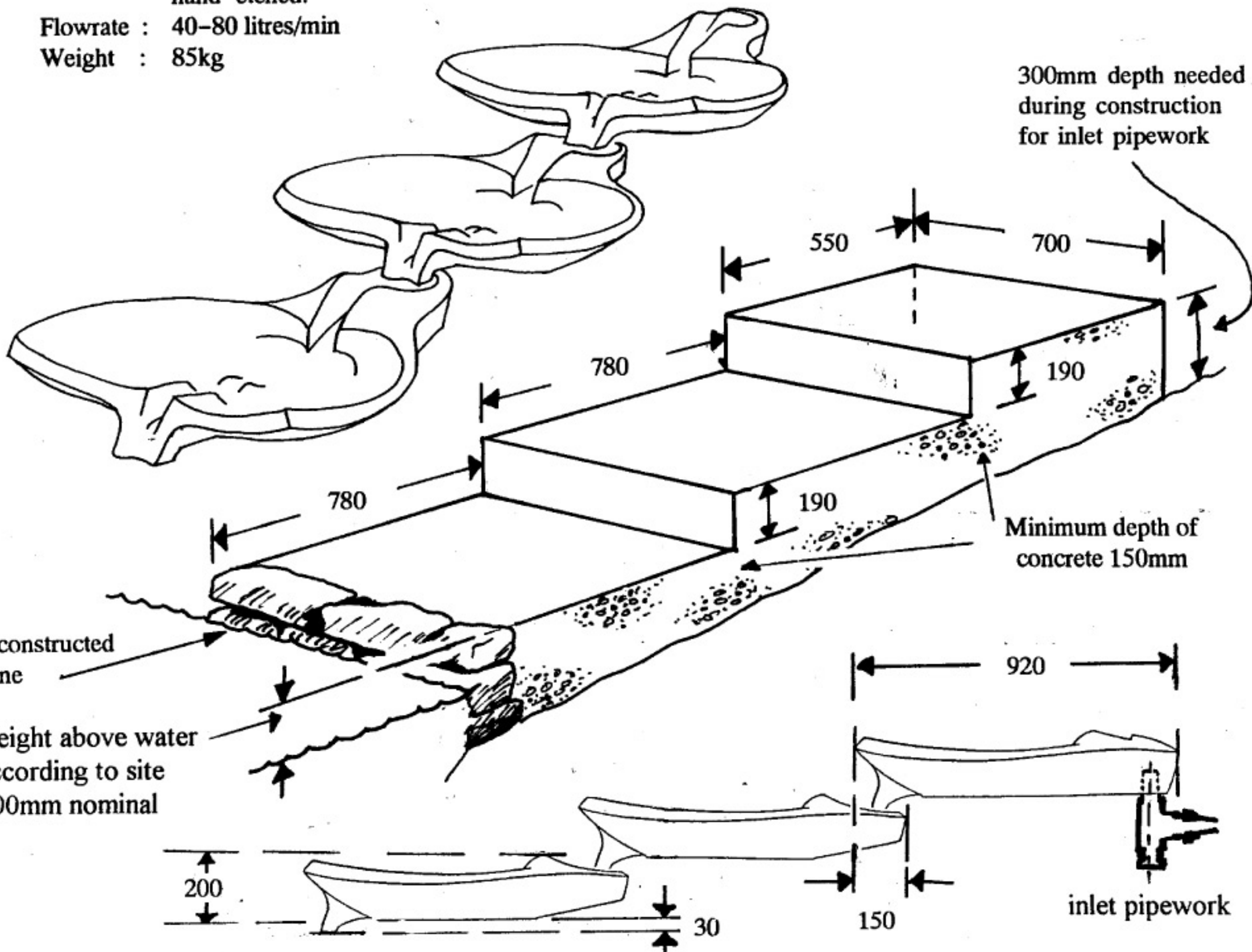
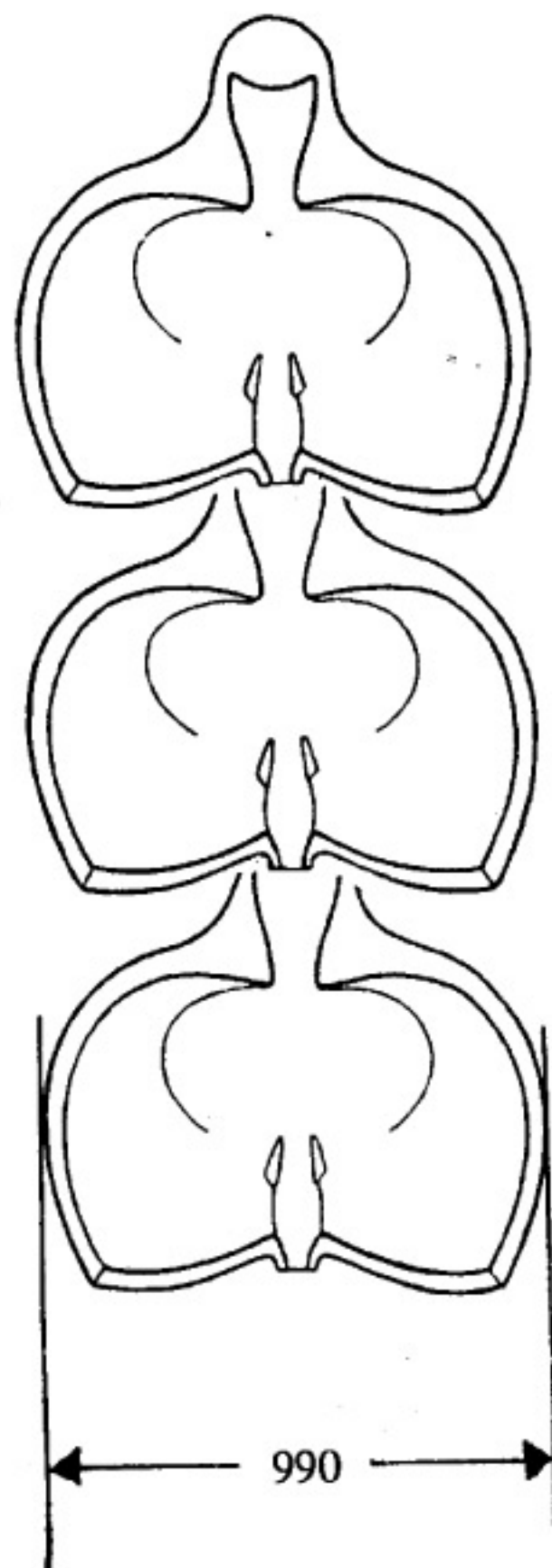
all dimensions in millimetres

### Specification

Material : Reconstituted Granite,  
hand-etched.

Flowrate : 40-80 litres/min

Weight : 85kg



Exposed face may be constructed  
in natural stone

Height above water  
according to site  
100mm nominal

Line may be curved up to 5° from  
straight at each junction

inlet pipework